



Deoxygenation Dryer



DT series

CHALLENGER DT



DT-60Z

CHALLENGER

High performance nitrogen dryer satisfy condition of both low oxygen and low dew point.

By use of the nitrogen in high-efficiency, and with minimum utility, the problem of oxygen contained in the resin pellets are reduced. That make possible to process material efficiently and stably.

Nitrogen drying system

Drying in high nitrogen concentration atmosphere suppress yellowing and defects products due to oxygen.

Low dew point

By removing moisture from the unit circulation by the in-line dehumidification unit, the consumption of instrumentation air is reduced and low dew point is maintained.

Maintenance improvement

Drying and conveying filters, cyclone type dust collector, and operation panel are placed toward same direction for easy maintenance.

Energy-saving

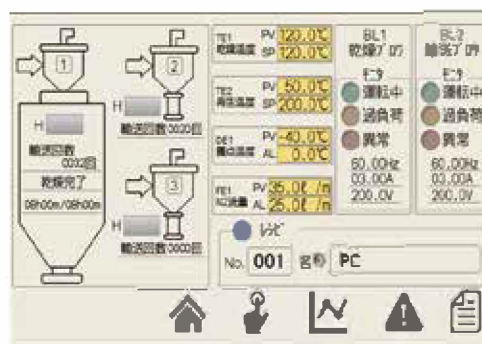
Efficiency of the installation space charged amount has been significantly improved compared to the conventional large-scale nitrogen dryer. Only a part of circulation air is regenerated by the reduced adsorbent and required less energy consumption for regeneration.

Intuitive operation

Visual images: Intuitive operation by using symbols and mechanical drawings. With large-size touch panel, giving more information and operability is improved by using of main/sub screen.



Trend graph Operation history of the dryer can be seen at a glance.



Screen of 8-inch tablet Remote control with wireless LAN is also available. (Option)

Also suitable for optical grade special resin

| | |
|-----------------------------------|---|
| PMMA | ◎ |
| COC | ◎ |
| COP | ◎ |
| Special polyester for optical use | ◎ |
| Special PC for optical use | ◎ |
| EXTEM®Resin/EXTEM® | ◎ |
| ULTEM®ULTEM®Resin/ULTEM® | ◎ |

※Trademark of SABIC Innovative Plastics IP B.V.

High specification

Secondary closed conveying

To prevent moisture absorption and contamination, outer air is not used for material transportation

Batch conveying by air cutting method

No material remains between dryer and molding machine. And, transportation volume can be adjusted with timer control

Cyclone dust collector

It reduces the cleaning frequency of the filter by removing powder and foreign particle included in the air after material transport.

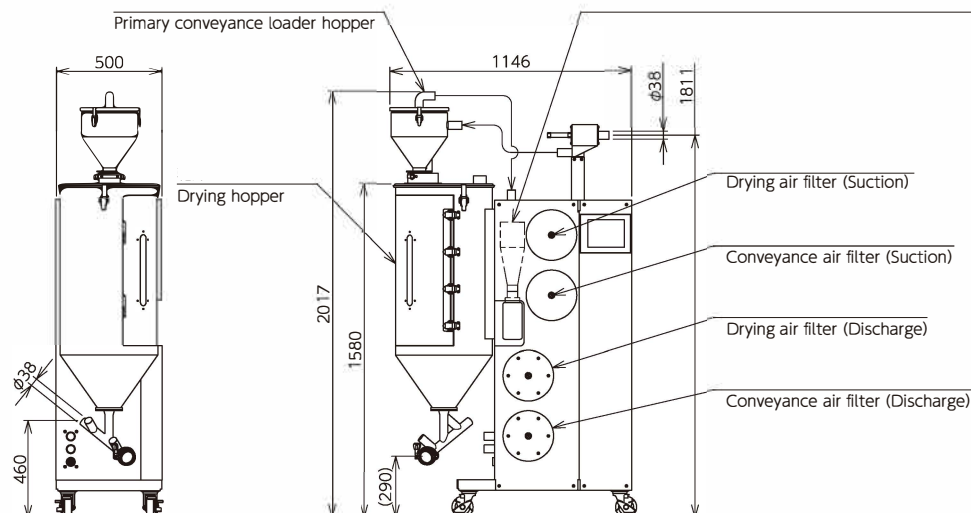
Double insulating hopper

Energy saving and precise drying by means of double layered insulated hopper, including corn part

Options

- Optional Nitrogen separation membrane
- Conveying blower up to 1.9kW
- Visual alarm (with buzzer)
- Power consumption display
- Emergency stop button
- Additional full level switch (Movable on sight glass)
- Simple capacity sign
- Capacity scale seal for drying hopper. Loaded volume in drying hopper is clear at a glance
- Suction pipe Dia.38x650 removable 1pc
- Heat resistant non PVC flexible hose $\phi 38 \times 5m$
- Connection cable additional 5m (Secondary conveying) 1 set
- Loader hopper replacement (secondary conveying) VL-02-3 → VL-07-3
- Additional hopper unit XF VL-02-3X
- Additional hopper unit XF VL-07-3X
- Additional valve for secondary line
- Additional material discharge for hopper cone
- Additional Nitrogen separation membrane

Dimensions



Specifications

| | | DT-60Z |
|---|-------------|--|
| Feeding Volume | (kg) | 60*1 |
| Drying Hopper effective capacity | (L) | 100 |
| Dew point | (°C) | -40 |
| Drying Temperature | (°C) | 80~140 |
| Drying Blower Capacity / Regeneration Blower Capacity | (kW) (60Hz) | 0.85 (INV) |
| Drying Heater Capacity / Regeneration Heater Capacity | (kW) | (Drying 2.7/Regeneration 0.8) |
| Convey2 | | VL-02-3 |
| Conveying Blower Capacity | (kW) (60Hz) | 0.85 (INV) |
| Power supply AC200V/200, 220V 50/60Hz (3phase) | (kVA) | 6.1/6.1, 6.9 |
| | (AT) | 30 |
| Compressed Air requirement | (L/min) | 300(0.5~0.7MPa) (Pipe size $\phi 12$) |
| Weight | (kg) | 260 |

*1 If varies according to the apparent specific gravity of material. The above are figures obtained when using pellets with a bulk density of 0.6g/cm³.

*These specifications are subject to change without notice.

*Please read the instructions manual carefully before use.



KAWATA U.S.A., Inc.

1701 E Woodfield Rd. Suite 630 Schaumburg, IL 60173

Phone: 847-379-1449

www.kawata-usa.com

HEAD OFFICE /Phone.81-6-6531-8211 Fax.81-6-6531-8216 INTERNATIONAL DIVISION /Phone.81-6-6531-2914 Fax.81-6-6531-8216

SALES OFFICE

(CHINA) KAWATA MACH. MFG. (SHANGHAI) CO., LTD.
 □ Shanghai Office /Phone.86-21-6289-8989
 □ Dalian Office /Phone.86-411-8753-8921
 □ Tianjin Office /Phone.86-22-2370-7800
 □ Shenzhen Office /Phone.86-755-8229-5250
 □ Guangzhou Office /Phone.86-20-3402-5200

(HONG KONG) KAWATA MACHINERY(HK) LTD. /Phone.852-3118-1326

(TAIWAN R.O.C) TAIWAN KAWATA CO., LTD. /Phone.886-3-534-1847

(THAILAND) KAWATA (THAILAND) CO., LTD. /Phone.66-2-692-1331

(VIETNAM) KAWATA (THAILAND) CO., LTD. /Phone.84-4-22250155

(Hanoi Representative Office)

(MALAYSIA) KAWATA MARKETING. SDN. BHD. /Phone.60-6-765-6628

(SINGAPORE) KAWATA PACIFIC PTE. LTD. /Phone.65-6286-8817

(INDONESIA) PT.KAWATA MARKETING INDONESIA /Phone.62-21-5790-0852

(PHILIPPINES) KLAUTOMATION EQUIPMENT SALES & SERVICES /Phone.63-2-681-6174

(Kawata (Thailand) Co., Ltd. Representative Office)

(INDIA) PREVISION WORLD (INDIA) PVT. LTD.

□ Delhi Office /Phone.91-11-4653-8972 □ Chennai Office /Phone.91-44-4273-8662

□ Pune Office /Phone.91-20-6510-4700

(MEXICO) KAWATA-MACHINERY MEXICO S.A.de C.V.

PLANT

(CHINA) KAWATA MACH. MFG. (SHANGHAI) CO., LTD. /Phone.86-21-6289-8989

(INDONESIA) PT. KAWATA INDONESIA /Phone.62-21-8984-4560